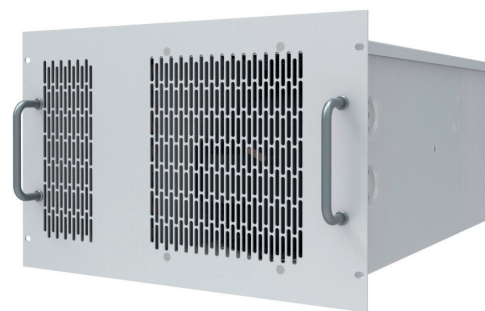


Rack - Indoor

The solution for 19" server racks

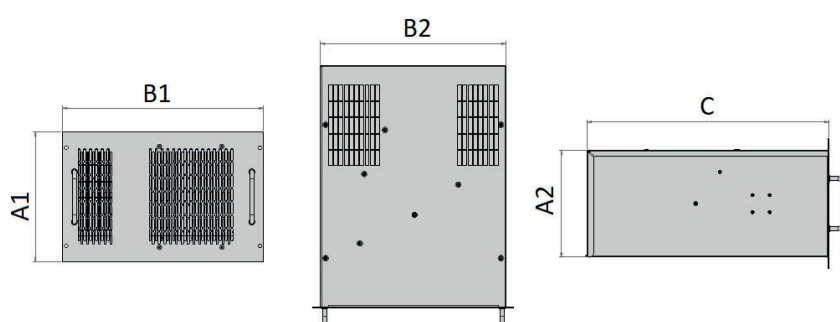
Small servers require low heat loads and small dimensions. The ERE air conditioner, with a footprint of only 7 rack units and an output of approximately 1000W, is suitable for cooling 19 cabinets. In addition to the compact dimensions, the panel mounting and the choice of internal air flows ensure easy and flexible installation in the server rack.



Main Features

- For Rack 19" cooling
- Cooling Capacity: 950 W
- 7 rack units
- Certifications: CE, EAC

ERE10



CODE	M.U.	ERE1000320
Rated Voltage	V, ~	230 . 1
Nominal Frequency	Hz	50/60
Cooling Capacity	L35L35 W	950
Cooling Capacity	L35L50 W	760
Power Consumption	L35L50 W	630
Current consumption	CE, L35L35 A	3
Start-up current	CE A	15
Internal operating temp..	min/ max °C	+25 / +45
External operating temp.	min/ max °C	+20 / +55
Internal circuit protection degree	CE IP	54
External sound pressure	dB(A)	65
Height (A)	mm	311
Width (B)	mm	482,6 - 446
Depth (C)	mm	580,5
Weigth	kg	36